

**Real Time Water Quality Monthly Report  
Waterford River - St. John's NL  
January 2007**

**General**

- Data from the Waterford River monitoring station is monitored by the Water Resources Management Division staff on a monthly basis.

**Maintenance and Calibration of Instrumentation**

- The following table displays the dates when the Datasonde was removed for routine cleaning, maintenance and calibration and when it was redeployed.

Table 1: Table of Datasonde removal and installation dates

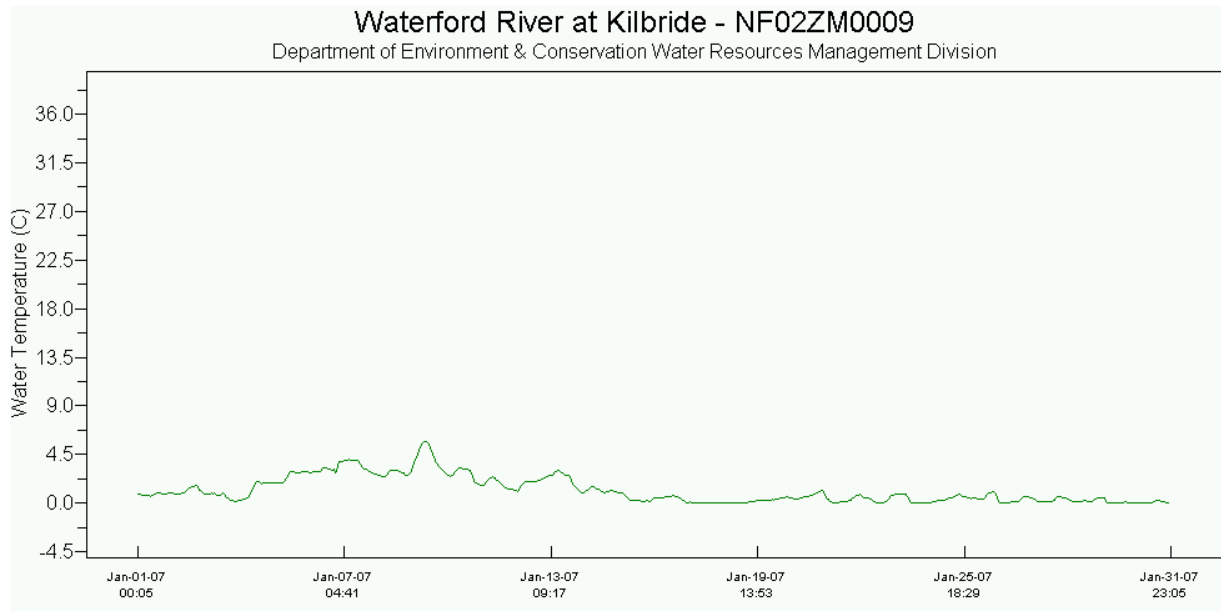
Date Installed	Date Removed
	January 19, 2007
January 22, 2007	

- Water quality readings were taken with a Minisonde at the time of removal for comparison purposes. The Minisonde was calibrated prior to use.

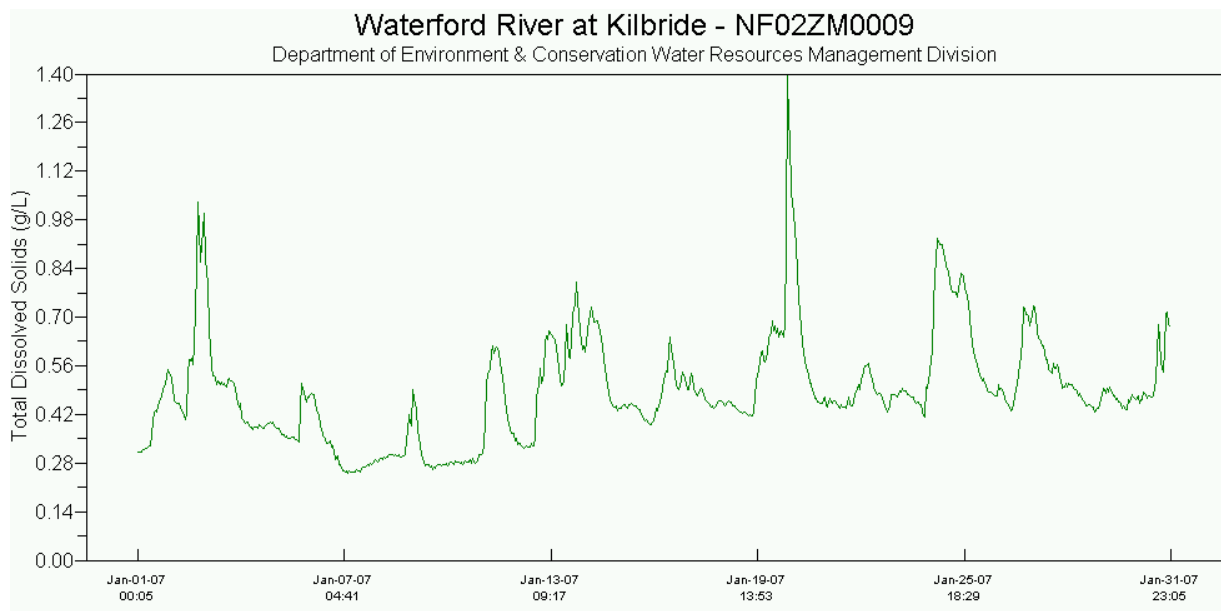
**Data Interpretation**

- Areas in the graphs where the data lines go abruptly down to the x axis and show no readings occur when the datasonde is removed for routine cleaning, maintenance and calibration. The dates where this occurs correspond to Table 1 above.
- In general, water quality parameters were stable during the month of January with expected daily/nightly (diurnal) and seasonal changes occurring.
- Water temperatures fluctuated in response to daily maximum and minimum air temperatures. This is demonstrated by comparing the graph in **Figure 1** to the air temperature data in **Appendix 1**.

**Figure 1**

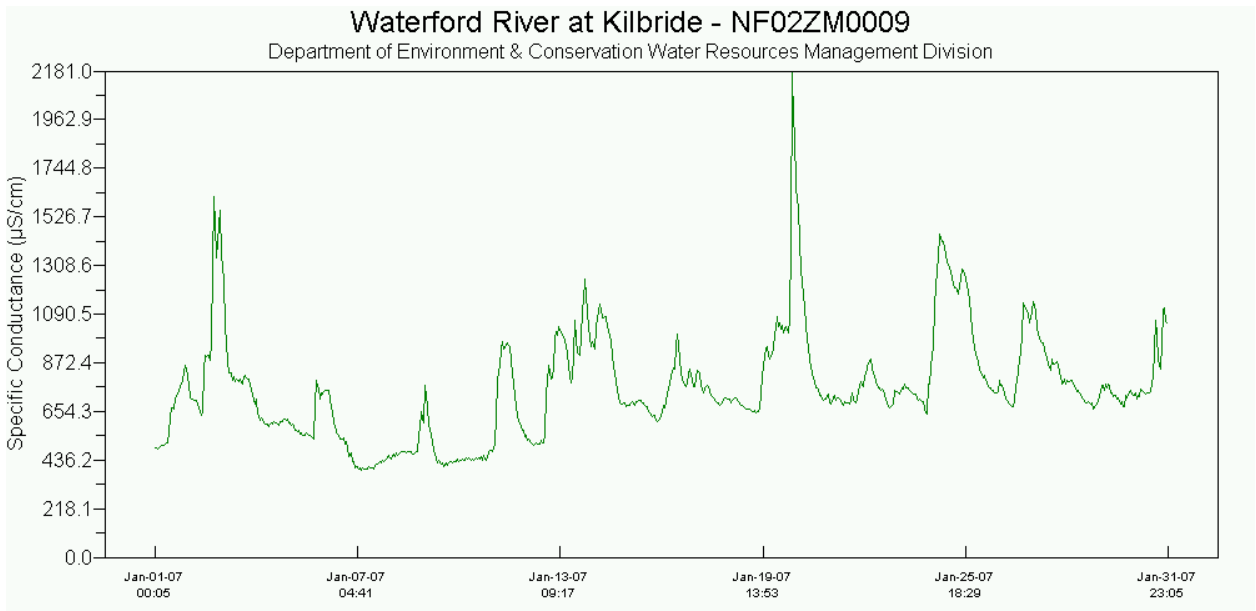


**Figure 2**



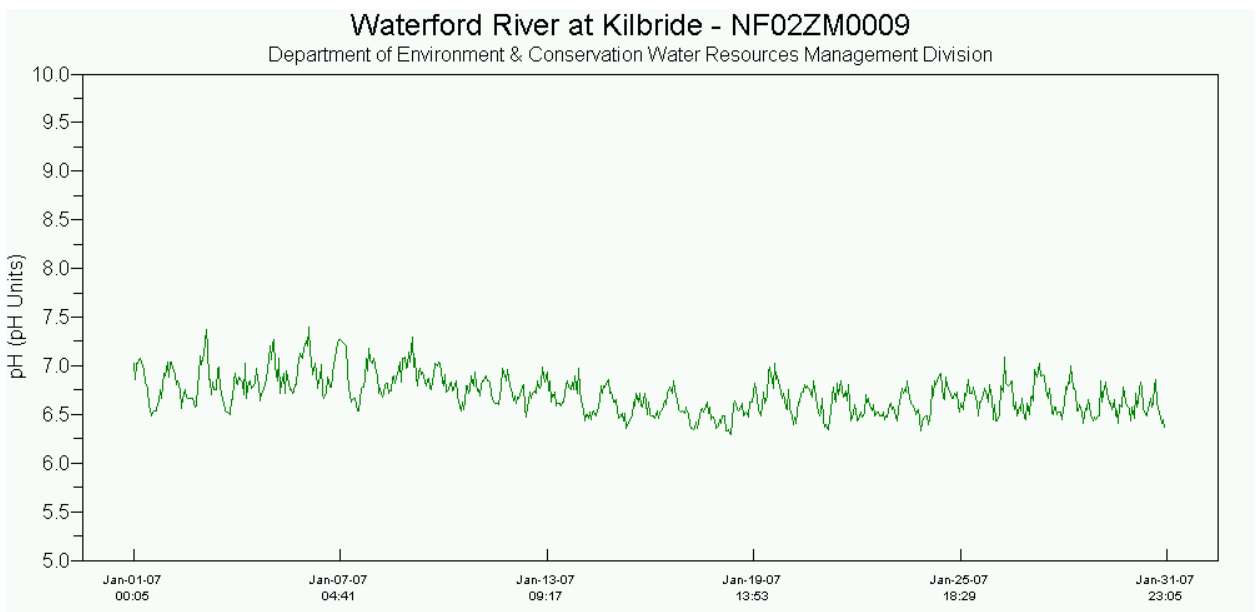
- Total dissolved solids levels reflected the changes in conductivity as observed in Figure 2. Conductivity measurements are a good indication of total dissolved solids and total dissolved ion concentrations, although this is not an exact linear relationship.

**Figure 3**



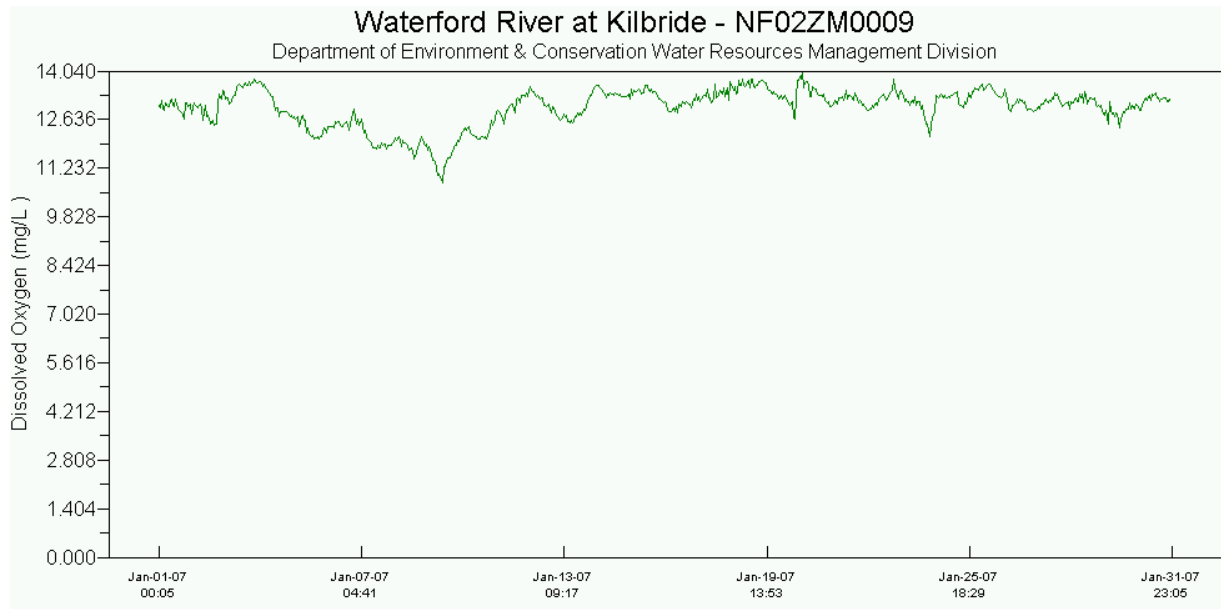
- Conductivity levels fluctuated throughout the month as observed in Figure 3.

**Figure 4**



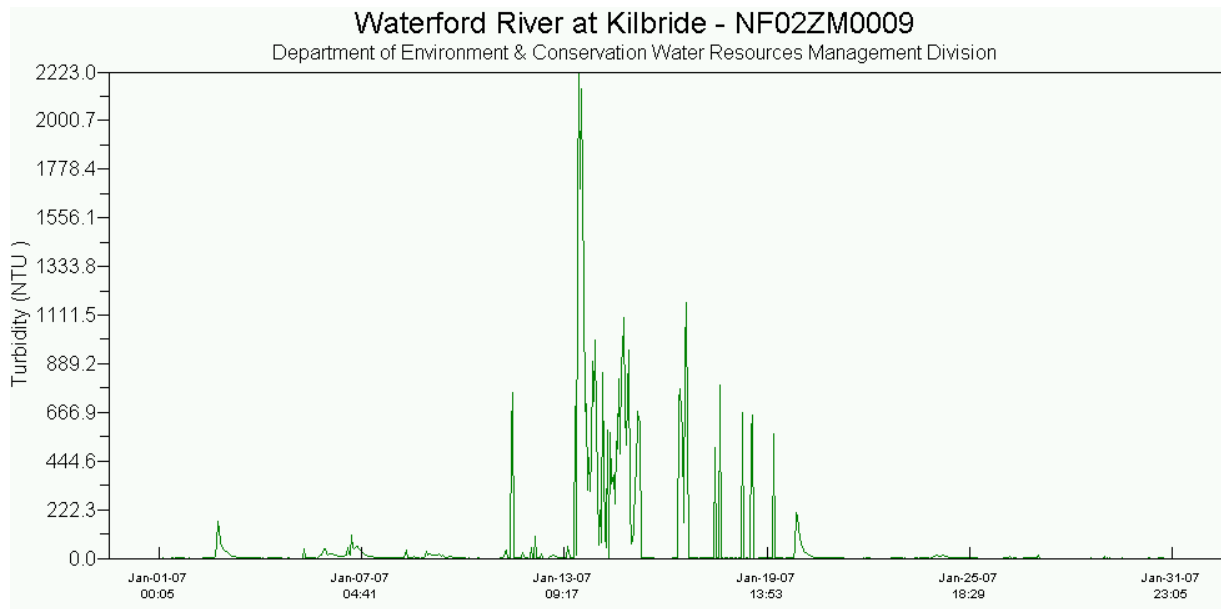
- The pH levels for the month of January were stable. There were some instances where the pH measurements were outside the CCME recommended Canadian Water Quality Guidelines for the Protection of Aquatic Life of 6.5 to 9 (Figure 4).

**Figure 5**



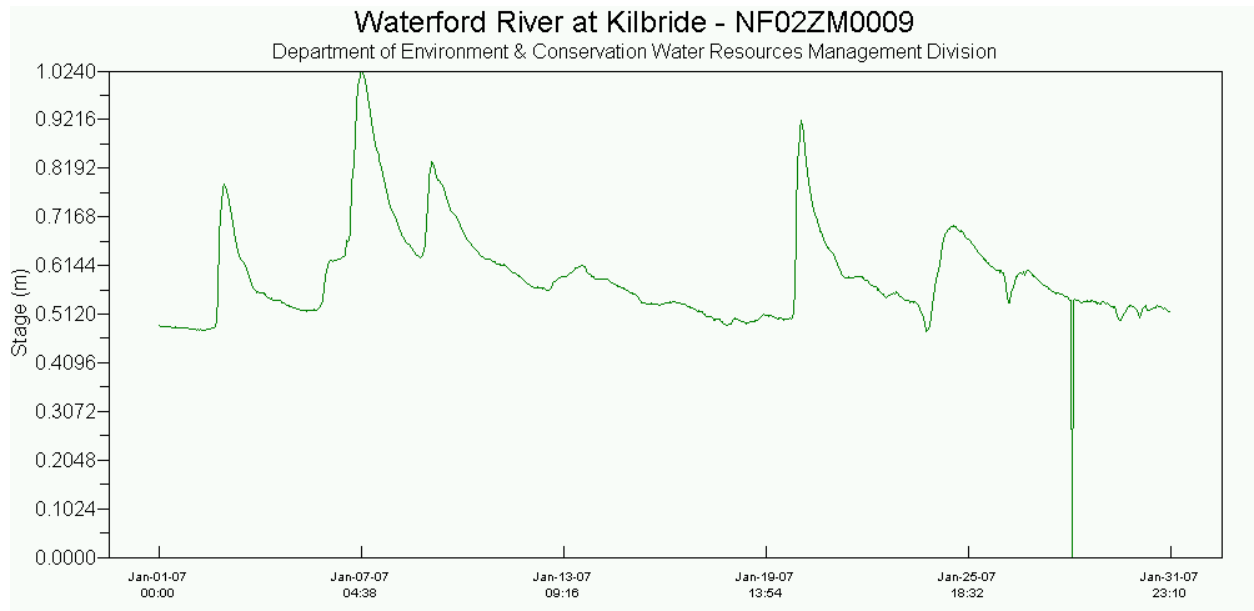
- Dissolved oxygen levels were stable during the period of measurement (Figure 5). DO levels are higher in January due to the lower water temperatures.

**Figure 6**



- Turbidity levels fluctuated and had several spikes noted throughout the month. The turbidity spikes (Figure 6) are normally in response to precipitation events. The high turbidity readings can be attributed to warm air temperatures causing snow melt and subsequent runoff and precipitation events. Several turbidity spikes exceeded the CCME recommended maximum of 8 NTU above background levels.

**Figure 7**



Report prepared by:

Kent Slaney  
Environmental Scientist  
Water Resources Management Division  
Department of Environment and Conservation  
Confederation Building West Block 4<sup>th</sup> Floor  
PO Box 8700  
St. John's NL A1B 4J6

Ph. (709) 729-1157  
Fax (709) 729-0320

Appendix 1: Weather information for St. John's, NL provided by Environment Canada for January 2007

Daily Data Report for January 2007											
D a y	Max Temp °C	Min Temp °C	Mean Temp °C	Heat Deg Days C	Cool Deg Days C	Total Rain mm	Total Snow cm	Total Precip mm	Snow on Grnd cm	Dir of Max Gust 10's Deg	Spd of Max Gust km/h
01†	-2.6	-4.7	-3.7	21.7	0.0	0.0	0.2	T	7	36	56
02†	5.6	-5.3	0.2	17.8	0.0	10.8	0.4	11.2	7	24	72
03†	1.2	-5.5	-2.2	20.2	0.0	0.0	0.4	0.4	1	29	83
04†	2.7	-2.1	0.3	17.7	0.0	T	0.0	T	1	25	48
05†	4.2	0.3	2.3	15.7	0.0	6.8	0.0	6.8	T	26	48
06†	12.5	3.9	8.2	9.8	0.0	21.8	0.0	21.8	T	24	69
07†	10.8	2.4	6.6	11.4	0.0	0.8	0.0	0.8	T	26	104
08†	3.8	0.0	1.9	16.1	0.0	1.0	2.0	3.0	T	18	96
09†	11.4	0.4	5.9	12.1	0.0	5.4	0.0	5.4		18	78
10†	2.3	-1.0	0.7	17.3	0.0	0.0	5.2	4.0	5	26	37
11†	-0.6	-4.5	-2.6	20.6	0.0	0.0	6.5	4.4	12	30	56
12†	1.2	-4.1	-1.5	19.5	0.0	0.0	0.6	0.6	12	25	46
13†	1.5	-4.0	-1.3	19.3	0.0	0.0	5.4	3.6	9	2	57
14†	-4.0	-6.6	-5.3	23.3	0.0	0.0	0.4	0.2	10	34	32
15†	-2.3	-9.9	-6.1	24.1	0.0	0.0	0.8	0.6	10	30	65
16†	-2.3	-9.6	-6.0	24.0	0.0	0.4	11.6	9.6	10	35	48
17†	-7.7	-15.3	-11.5	29.5	0.0	0.0	0.4	0.4	14	28	56
18†	-10.2	-16.6	-13.4	31.4	0.0	0.0	T	T	12	29	52
19†	0.2	-13.7	-6.8	24.8	0.0	0.0	0.4	0.2	8	16	61
20†	3.3	-3.1	0.1	17.9	0.0	15.2	0.0	15.2	6	15	89
21†	0.1	-4.5	-2.2	20.2	0.0	0.0	16.4	16.4	2	31	57
22†	-4.4	-10.0	-7.2	25.2	0.0	0.0	0.4	T	12	27	41
23†	-2.5	-11.3	-6.9	24.9	0.0	0.0	2.2	1.4	11	6	56
24†	1.6	-2.8	-0.6	18.6	0.0	9.0	10.8	14.4	19	5	83
25†	0.6	-4.4	-1.9	19.9	0.0	0.6	0.6	1.2	18	26	57
26†	2.2	-6.8	-2.3	20.3	0.0	0.0	11.2	10.0	16	7	96
27†	0.4	-4.0	-1.8	19.8	0.0	0.0	1.8	1.8	20	17	96
28†	-2.9	-6.4	-4.7	22.7	0.0	0.0	T	T	18	27	67
29†	-2.4	-7.6	-5.0	23.0	0.0	0.0	11.0	11.0	18	5	59
30†	-2.3	-9.1	-5.7	23.7	0.0	0.0	6.6	6.6	32	28	74
31†	-5.4	-10.1	-7.8	25.8	0.0	0.0	0.4	T	30	27	46
<b>Sum</b>				<b>638.3</b>	<b>0.0</b>	<b>71.8</b>	<b>95.7</b>	<b>151.0</b>			